

# Globe

THE BOSTON

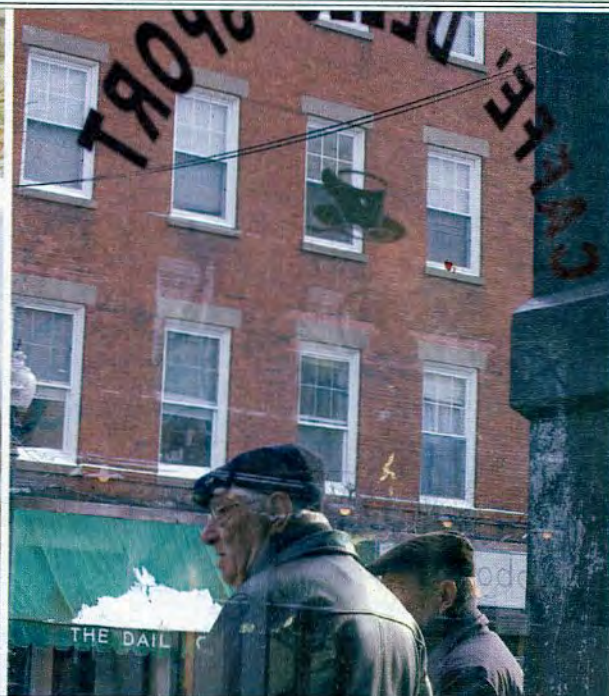
[ New Column! Dating, Mating, Relating.

ALSO

**Seeing Red:** A New Eng  
Southern Quest: "Wh

**Shell Games:** Omelets, Pa  
Salads With Only the B

01.23.05 /// MAGAZINE



## Ciao, Boston

The North End fights to maintain its Old World charm while facing big-city change.

BY WILL KILBURN



# Found Chic

Rhode Island designer Kimberly Sliney isn't afraid to mix elegant materials with bargain accessories.



**F**lea markets and outlet shops don't spring to mind when you step into the luxurious master bathroom that interior designer Kimberly A. Sliney created in her recently completed house in North Kingstown, Rhode Island. But it's an outdoor-market chandelier and a pair of outlet-shop mirrors that really finish the room's glamorous look.

Sliney picked the vintage light fixture out of a booth at the Brimfield Antique and Collectibles Show, the huge antiques market held in Brimfield several times each year. It was one of four chandeliers Sliney brought home that day.

While the Federal-style house, planned with the help of Warwick residential designer Wayne Pimental, is new, Sliney says she tried to use only antique lighting "in order to give the interiors a sense of age." To enhance the intimate aura of the master bathroom, which measures 16 feet by 16 feet, she had an 8-inch-deep niche cut into the center of the 10-foot-high ceiling and finished the niche with molding. "The recess gives the ceiling a little dimension, so it's not a huge flat expanse," says Sliney. The light fixture is centered in the

niche, a design technique that can be used in rooms where the ceiling height is too low to accommodate a dangling chandelier.

Sliney spied the mirrors in an outlet shop in Conway, New Hampshire, and although they were black and gold and "hideous," she imagined them transformed by a coat of what Sliney calls French-blue paint, a shade of turquoise that suggests European elegance. Make that three coats, for the real secret to the polished look throughout the house is in the craft of the painter, in this case Sliney's 79-year-old father, Ernest LaFontaine. "He was a master carpenter and finish painter his whole life," says Sliney, "and he only does things the old-fashioned way. The mirrors have three coats of paint, and he sanded and cleaned with alcohol between every coat." Hanging above the double vanity, the mirrors today look exactly as Sliney had hoped. "It just takes a little imagination — and an amazing dad," she says.

From the very start, Sliney envisioned a master bathroom that was large and gracious, and working with Pimental, she saw that vision realized through her choice of materials. Marble covers the floor, shower, vanity, and

tub surround and forms a wainscot around the room. Wooden columns add a classical touch to the stairs leading to the tub. The upper walls are covered in a toile-patterned paper in the same French blue as the mirrors, a color carried through in the adjoining bedroom. And making the whole bath positively sparkle in the daylight are two large double-hung windows. "The design for the room was really inspired by the natural light," says Sliney. "I saw those two great windows and knew it could be a very open yet elegant room." **EG**

*Jill Connors is a freelance writer. She can be reached at [jillconnors@cox.net](mailto:jillconnors@cox.net).*

## REFLECTIONS

Interior design by Kimberly A. Sliney Design, North Kingstown, Rhode Island, 401-439-9917; residential design by Wayne Pimental, Warwick, Rhode Island, 401-737-6345. The next Brimfield Antique and Collectibles Show is May 9 through 15. For more information, visit [www.brimfieldshow.com](http://www.brimfieldshow.com).

A DESIGNER'S VISION transformed an antique chandelier and a pair of outlet-store mirrors into elegant finishing touches in Kimberly Slaney's master bathroom.

